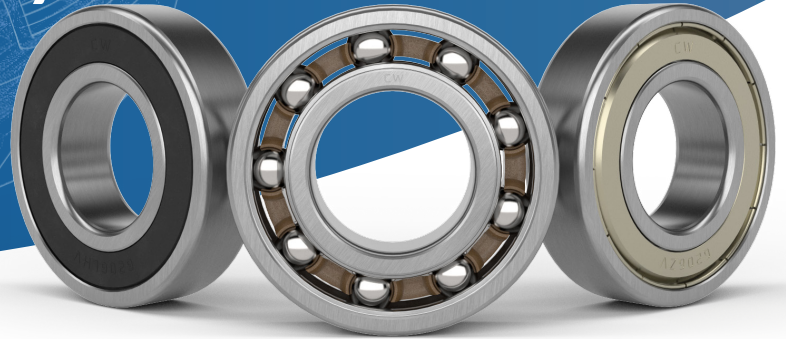


BEARING

CW

CW Bearing Stands For Aftermarket Quality

Make us your top-of-mind partner for hub assemblies and bearings



We understand the importance of quality and reliability in every component of your vehicle.

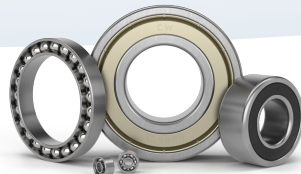
That's why we are dedicated to providing top-of-the-line hub assemblies and bearings that meet Original Equipment (OE) standards. Our products are meticulously engineered and rigorously tested to ensure they deliver unmatched performance. Whether you're a professional mechanic or a DIY

enthusiast, you can trust CW Bearing for parts that keep your vehicle running smoothly and safely. Discover the difference that OE-standard quality can make with CW Bearing, your go-to source for exceptional automotive parts. **Our solutions include:**



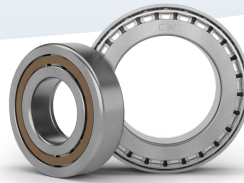
HUB ASSEMBLIES & WHEEL BEARINGS

Hub Assemblies and Wheel Bearings provide a smooth, stable connection between the wheel and axle for proper rotation and support for the weight of the vehicle.



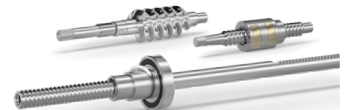
BALL BEARINGS

Ball bearings reduce friction and support radial and axial loads, ensuring smooth, efficient rotation in various mechanical applications.



ROLLER BEARINGS

Our roller bearings handle heavy radial and axial loads with low friction, ensuring reliable performance in demanding industrial and automotive applications.



STEERING COMPONENTS

Steering components are crucial for precise control, transferring the driver's input from the steering wheel to the wheels for safe, responsive handling.



Scan to browse our eCatalog

The CW Bearing Difference

Manufacturing Excellence

Manufacturing at the highest level of quality and supplying customers with superior products is our main focus. By employing established automotive processes and adhering to rigorous quality standards, CW Bearing offers flexibility in production and design combined with strict application engineering competence. An experienced team of knowledgeable engineers, combined with quality control teams and test rigs that conduct extensive



testing, ensures that CW Bearing provides customers with the finest bearing products available.

A major Tier 2 supplier to industry-leading companies, CW Bearing follows high-process manufacturing standards and uses the same high-quality components as OE manufacturers, to build to OE specifications. Employing state-of-the-art measuring devices gives us the ability to meet the customer requirements for deep groove ball bearings, angular contact ball bearings, four-point bearings, hub bearings and ball screws. In short, CW Bearing gives customers flexible, fast, and high-quality individual solutions.

Solution Driven

Your Requirements. Our Standard.

Customers' requirements and quality expectations are at the center of everything we do. For each one of the 600 million rolling bearings we produce each year, we have set a "zero-defect policy" as our goal. Our processes, which have been audited many times by demanding automotive customers, vouch for our quality and brand promise.

Because every application has its own requirements for ball bearings or ball screws, CW Bearing will collaborate with you to find the perfect solution. You will benefit from the comprehensive industry and technological know-how of our experts. From consulting, specification, and application engineering to on-time delivery and beyond, we are at your side.

Quality Management

Certification Matters.

Of course, we only produce for you in our own plants, which are all certified according to DIN EN ISO 9001 and IATF 16949. Two of our guiding principles are to continuously improve ourselves and to sustainably invest in new production capacities.

